

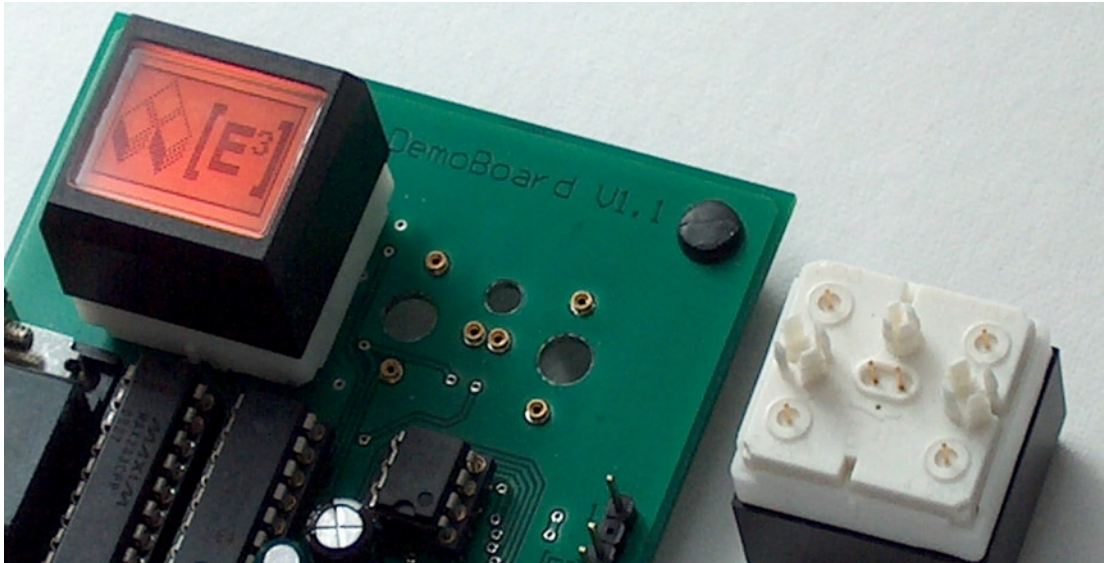
# SL0000 Socket Lock for Sxnnn Switches

# TABLE OF CONTENTS

- General Description.....3
- Drawing.....4
- Notices.....5
  - Copyright Notice.....5
  - Technical Notice.....5
  - Warranty Disclaimer.....5
- Ordering Information.....6
- Change History.....6

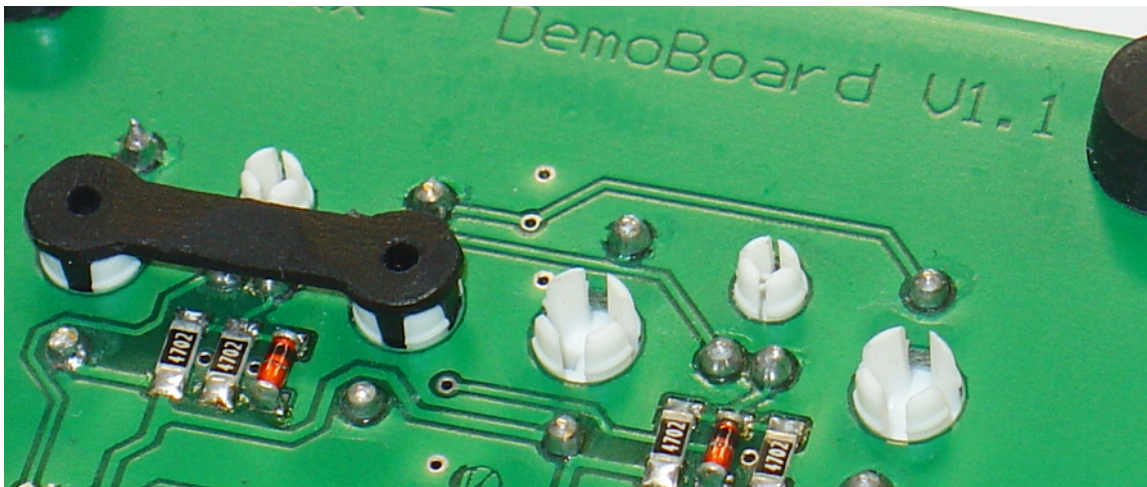
# GENERAL DESCRIPTION

SL0000 socket locks secure the Sxnnnn switches from [E<sup>3</sup>] in the circuit board when used in combination with the SP0000 socket pin receptacles.



SP0000 socket pins in circuit board (center) with installed switch (left) and underside of uninstalled switch (right)

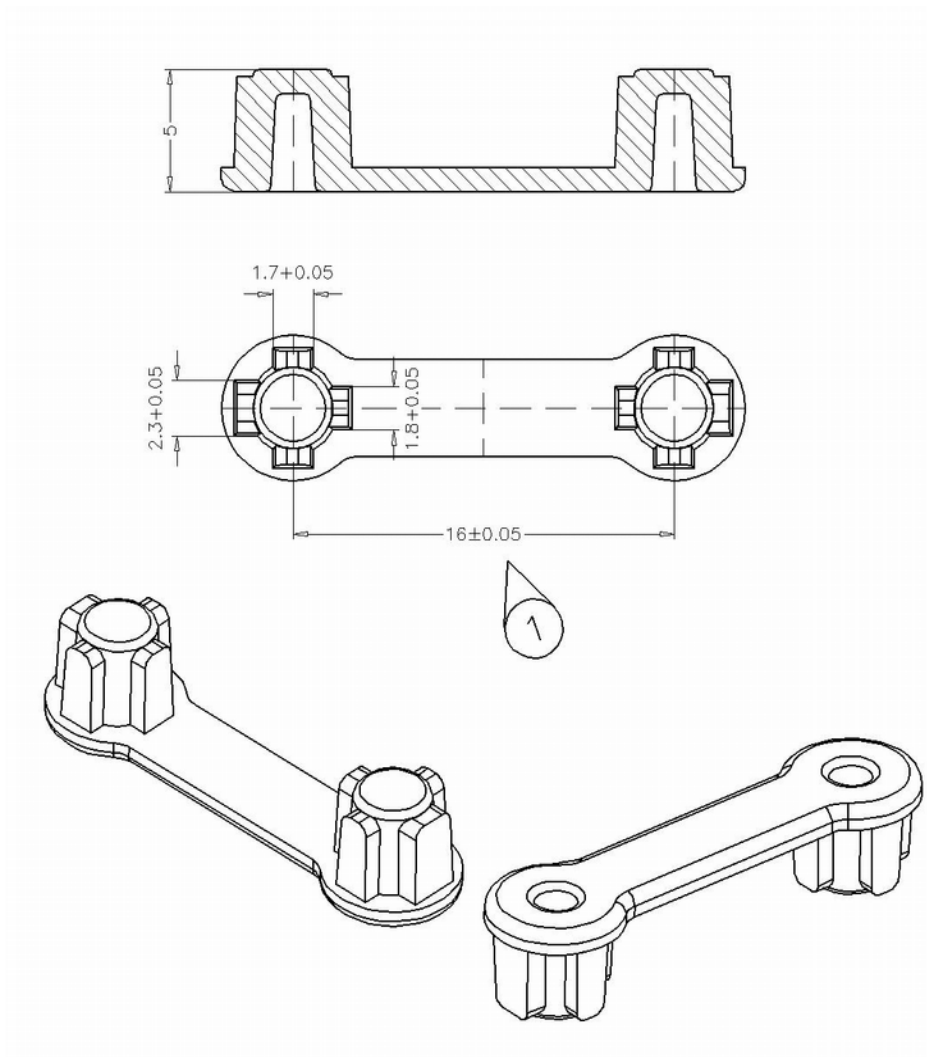
Switches are secured in the high precision sockets with spring tension (see above). Switches that have been installed in the socket pins can still be removed from the front. To prevent this, the switches can be secured in the socket pin receptacles with SL0000 socket locks (see below).



The SL0000 socket lock (left) fit into the prongs of the Sxnnn switches.

The prongs of the Sxnnn switches are designed to fit 1.6mm and 2.0mm printed circuit boards. Once the SL0000 socket locks are inserted the switches can no longer be removed from the front. The socket locks must be removed first before the switches can be released from the PCB and socket pins.

# DRAWING



CAD Drawings of SL0000 Socket Lock



# NOTICES

## Copyright Notice

© 2011-2024 Copyright [E<sup>3</sup>] Engstler Elektronik Entwicklung GmbH. All rights reserved.

[E<sup>3</sup>], *The Third Evolution*™ and *Legacy Mode*™ are trademarks of [E<sup>3</sup>]. *The Keys to Intelligence*™ is a trademark of I/O Universal Technologies, Inc. used with permission. All other trademarks are property of their respective owners.

No part of this publication may be copied, photocopied, reproduced, translated or reduced to any electronic medium or machine-readable form without the expressed written consent of [E<sup>3</sup>] Engstler Elektronik Entwicklung GmbH.

## Technical Notice

This datasheet is intended for technically qualified personnel trained in the field of electronics.

The knowledge of electronics and the technically correct implementation of the content of this datasheet are required for problem free installation, implementation and safe operation of the described product. Only qualified personnel have the required know-how to implement the specifications given in this data sheet.

For clarity, not all details regarding the product or its implementation, installation, operation, or maintenance have been included. Should you require additional information or further assistance, please contact your local [E<sup>3</sup>] distributor or [E<sup>3</sup>] Engstler Elektronik Entwicklung GmbH at [techsupport@e3-keys.com](mailto:techsupport@e3-keys.com). You may also visit our website at [www.e3-keys.com](http://www.e3-keys.com).

## Warranty Disclaimer

[E<sup>3</sup>] ENGSTLER ELEKTRONIK ENTWICKLUNG GMBH grants no warranty with respect to this data sheet, neither explicit nor implied, and it is not liable for direct or indirect damages. Some states do not grant the exclusion of incidental or consequential damages and, therefore, this statement may not be valid in such cases.

This data sheet has been produced with all due care. However, since errors cannot be excluded, [E<sup>3</sup>] Engstler Elektronik Entwicklung GmbH does not grant any warranty or accept any legal responsibility or liability in any form for erroneous statements herein.

# ORDERING INFORMATION

Part Number	Description
SL0000	Socket locks for Sxnnnn switches
SP0000	Socket pin receptacles for Sxnnnn switches

# CHANGE HISTORY

Version	Date	Comments
0.1	02/14/11	Initial draft document
1.0	10/16/19	Format Update
1.1	07/14/20	New Formatting
1.2	10/08/24	New Corporate Address

**[E<sup>3</sup>] Engstler Elektronik Entwicklung GmbH**  
Auweg 27 • 63920 Grossheubach • Germany

[WWW.E3-KEYS.COM](http://WWW.E3-KEYS.COM)