



# SG0000 Switch Guard for CP-Series Control Panels

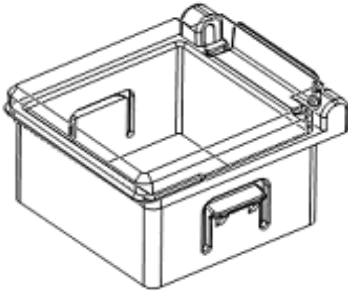
# TABLE OF CONTENT

- General Description.....3**
- Drawings.....3**
- Installation.....3**
- Notices.....4**
  - Copyright Notice.....4
  - Technical Notices.....4
  - Life Support Applications.....4
  - Warranty Disclaimer.....4
- Ordering Information.....5**
- Change History.....5**

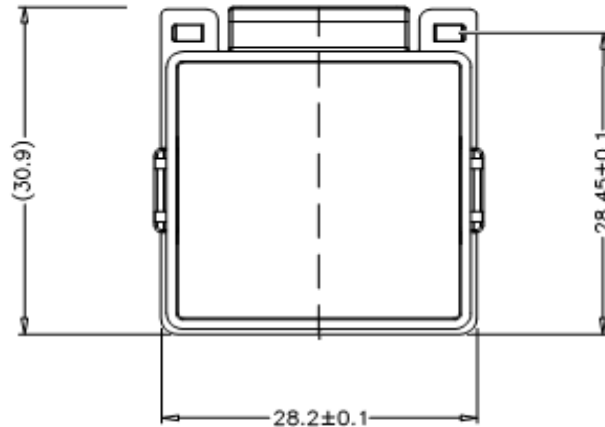
# GENERAL DESCRIPTION

The SG0000 is a panel-mountable switch guard for Sxnnnn switches from [E<sup>3</sup>] Engstler Elektronik Entwicklung GmbH. The SG0000 switch guard prevents unintentional operation of the Sxnnnn switches by installing a cover over the switch keycap. In order to operate the Sxnnnn switches, the SG0000 switch guard must first be manually opened.

## DRAWINGS

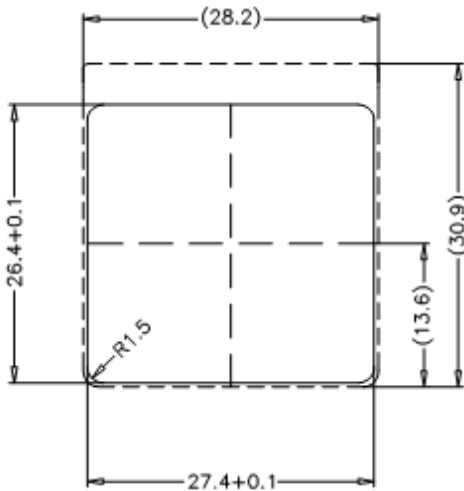


3-D View



Top View

## INSTALLATION



Panel Cutout

### NOTE:

**Make sure that side latches snap into position securing the switch guard in place. Improper installation may interfere with operation of the switches.**

**To dismantle the Switch Guard depress side latches with flat-head screwdriver from back and remove switch guard housing to front**

Cutout Dimensions (X – Y): 27.4+0.1 mm x 26.4+0.1 mm

Frame Thickness: 4.0 -0.05 mm

Mounting Method: Snap-in front panel insert  
Insert into metal frame without switches installed

# NOTICES

## Copyright Notice

© 2020-2024 Copyright [E<sup>3</sup>] Engstler Elektronik Entwicklung GmbH. All rights reserved.

[E<sup>3</sup>], *The Third Evolution*<sup>™</sup> and *Legacy Mode*<sup>™</sup> are trademarks of [E<sup>3</sup>]. *The Keys to Intelligence*<sup>™</sup> is a trademark of I/O Universal Technologies, Inc. used with permission. All other trademarks are property of their respective owners.

No part of this publication may be copied, photocopied, reproduced, translated or reduced to any electronic medium or machine-readable form without the expressed written consent of [E<sup>3</sup>] Engstler Elektronik Entwicklung GmbH.

## Technical Notices

This datasheet is intended for technically qualified personnel trained in the field of electronics.

The knowledge of electronics and the technically correct implementation of the content of this datasheet are required for problem free installation, implementation and safe operation of the described product. Only qualified personnel have the required know-how to implement the specifications given in this data sheet.

For clarity, not all details regarding the product or its implementation, installation, operation, or maintenance have been included. Should you require additional information or further assistance, please contact your local [E<sup>3</sup>] distributor or [E<sup>3</sup>] Engstler Elektronik Entwicklung GmbH at [techsupport@e3-keys.com](mailto:techsupport@e3-keys.com). You may also visit our website at [www.e3-keys.com](http://www.e3-keys.com).

## Life Support Applications

The products discussed in this document are not designed for use in life support appliances, devices, or systems where malfunction of these products can reasonably be expected to result in personal injury. [E<sup>3</sup>] customers using or selling these products for use in such applications do so at their own risk and agree to fully indemnify [E<sup>3</sup>] for any damages resulting from such improper use or sale.

## Warranty Disclaimer

[E<sup>3</sup>] ENGSTLER ELEKTRONIK ENTWICKLUNG GMBH grants no warranty with respect to this data sheet, neither explicit nor implied, and it is not liable for direct or indirect damages. Some states do not grant the exclusion of incidental or consequential damages and, therefore, this statement may not be valid in such cases.

This data sheet has been produced with all due care. However, since errors cannot be excluded, [E<sup>3</sup>] Engstler Elektronik Entwicklung GmbH does not grant any warranty or accept any legal responsibility or liability in any form for erroneous statements herein.

# ORDERING INFORMATION

Part Number	Description
SG0001	Switch guard for Sxxxx switches in CP custom control panels – STAY CLOSED
SG0002	Switch guard for Sxxxx switches in CP custom control panels – STAY OPEN

# CHANGE HISTORY

Version	Date	Comments
0.1	11/29/07	Initial draft document
0.2	02/28/08	Updated specifications added
1.0	12/07/10	Release version
1.1	10/25/19	Format update
2.0	06/21/22	Updated release version
2.1	10/08/24	New corporate address

**[E<sup>3</sup>] Engstler Elektronik Entwicklung GmbH**  
Auweg 27 • 63920 Grossheubach • Germany

[WWW.E3-KEYS.COM](http://WWW.E3-KEYS.COM)