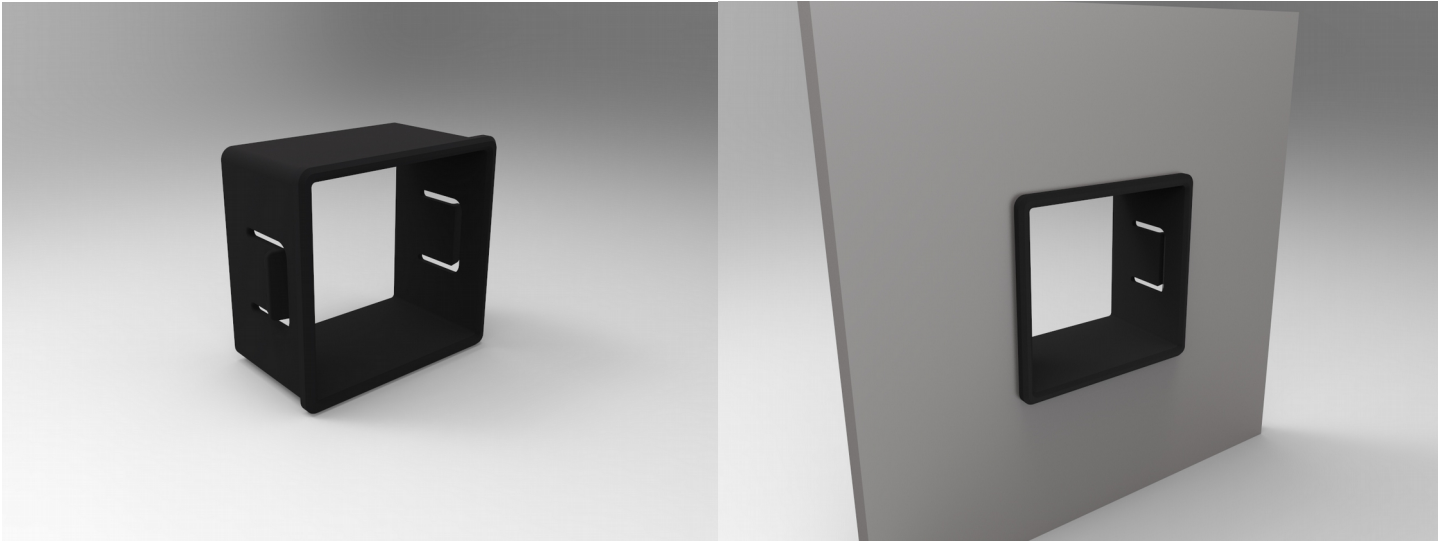


# SF0000 Switch Frame for CP-Series Control Panels

# TABLE OF CONTENT

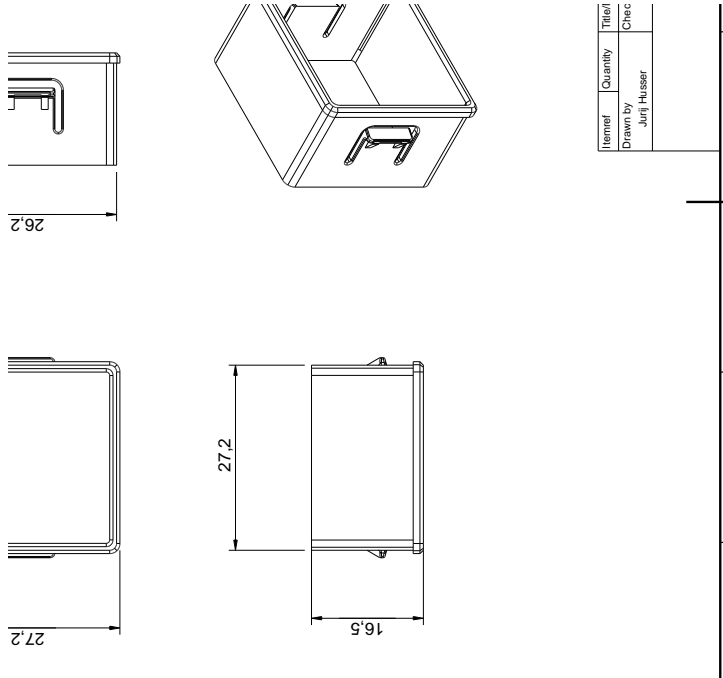
- General Description.....3
- Dimensions.....3
- Cutout.....4
- Installation.....4
- Notices.....5
  - Copyright Notice.....5
  - Technical Notices.....5
  - Life Support Applications.....5
  - Warranty Disclaimer.....5
- Ordering Information.....6
- Change History.....6

# GENERAL DESCRIPTION

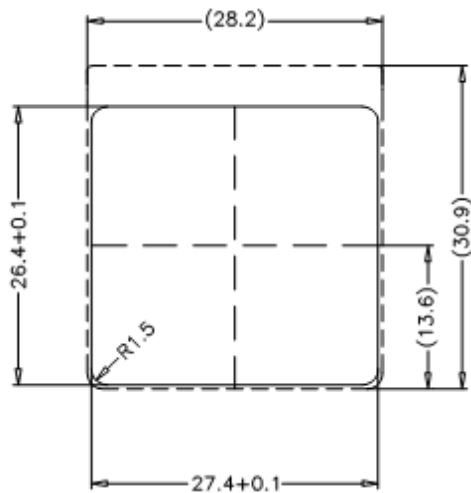


SF0000 switch frames allow for front panel mounting of individual Sxnnnn switches by themselves or in combination with SG0000 switch guards.

# DIMENSIONS



# CUTOUT



Panel Cutout

Cutout Dimensions (X – Y):	27.4+0.1 mm x 26.4+0.1 mm
Frame Thickness:	4.0 -0.05 mm
Mounting Method:	Snap-in front panel insert Insert into metal frame without switches installed

# INSTALLATION

Make sure that side latches snap into position securing the switch guard in place. Improper installation may interfere with operation of the switches.

To dismount the Switch Frame depress side latches with flat-head screwdriver from the back and remove switch guard housing by pulling towards the front.

# NOTICES

## Copyright Notice

© 2020-2022 Copyright [E<sup>3</sup>] Engstler Elektronik Entwicklung GmbH. All rights reserved.

[E<sup>3</sup>], *The Third Evolution*<sup>™</sup> and *Legacy Mode*<sup>™</sup> are trademarks of [E<sup>3</sup>]. *The Keys to Intelligence*<sup>™</sup> is a trademark of I/O Universal Technologies, Inc. used with permission. All other trademarks are property of their respective owners.

No part of this publication may be copied, photocopied, reproduced, translated or reduced to any electronic medium or machine-readable form without the expressed written consent of [E<sup>3</sup>] Engstler Elektronik Entwicklung GmbH.

## Technical Notices

This datasheet is intended for technically qualified personnel trained in the field of electronics.

The knowledge of electronics and the technically correct implementation of the content of this datasheet are required for problem free installation, implementation and safe operation of the described product. Only qualified personnel have the required know-how to implement the specifications given in this data sheet.

For clarity, not all details regarding the product or its implementation, installation, operation, or maintenance have been included. Should you require additional information or further assistance, please contact your local [E<sup>3</sup>] distributor or [E<sup>3</sup>] Engstler Elektronik Entwicklung GmbH at [techsupport@e3-keys.com](mailto:techsupport@e3-keys.com). You may also visit our website at [www.e3-keys.com](http://www.e3-keys.com).

## Life Support Applications

The products discussed in this document are not designed for use in life support appliances, devices, or systems where malfunction of these products can reasonably be expected to result in personal injury. [E<sup>3</sup>] customers using or selling these products for use in such applications do so at their own risk and agree to fully indemnify [E<sup>3</sup>] for any damages resulting from such improper use or sale.

## Warranty Disclaimer

[E<sup>3</sup>] ENGSTLER ELEKTRONIK ENTWICKLUNG GMBH grants no warranty with respect to this data sheet, neither explicit nor implied, and it is not liable for direct or indirect damages. Some states do not grant the exclusion of incidental or consequential damages and, therefore, this statement may not be valid in such cases.

This data sheet has been produced with all due care. However, since errors cannot be excluded, [E<sup>3</sup>] Engstler Elektronik Entwicklung GmbH does not grant any warranty or accept any legal responsibility or liability in any form for erroneous statements herein.

# ORDERING INFORMATION

Part Number	Description
SF0000	Switch frame for Sxnxxx switches in CP custom control panels

# CHANGE HISTORY

Version	Date	Comments
0.1	07/29/20	Initial draft document
1.0	06/09/22	Release Document

**[E<sup>3</sup>] Engstler Elektronik Entwicklung GmbH**  
Industriering 7 • 63868 Grosswallstadt • Germany  
[WWW.E3-KEYS.COM](http://WWW.E3-KEYS.COM)